



Rabbit anti SCG2 Polyclonal Antibody

Alternative Name(s): Secretogranin II

Order Information

- **Description:** SCG2 (Secretogranin II)
- **Catalogue:** 630-330
- **Lot:** See label
- **Size:** 100ug/200ul
- **Host:** Rabbit
- **Clone:** nan
- **Application:** IHC(P), WB
- **Reactivity:** Ms, Rt,

ANTIGEN PREPARATION

A synthetic peptides close to internal sequence of human SCG2 protein. This sequence is identical among human, rat and mouse.

BACKGROUND

SCG2 (Secretogranin II) is a tyrosine-sulfated secretory protein. The secretory granules of endocrine cells and neurons express it. The full-length protein, secretogranin II, is involved in the packaging or sorting of peptide hormones and neuropeptides into secretory vesicles. SCG2 consists of an -E-N/S-L-X-A/D-X-D/E-X-E-L- motif and multiple potential dibasic cleavage sites for the generation of smaller, perhaps biologically active peptides but lacks the disulfide-bonded loop structure at the NH2 terminus. It plays a vital role in the organization of the secretory granule matrix followed by sorting of secretory granules. It has been reported that SCG2 can be used to recognize the difference between benign and malignant pheochromocytomas.

PURIFICATION

The Rabbit IgG is purified by site-modified Epitope Affinity Purification.

FORMULATION

This affinity purified antibody is supplied in sterile Phosphatebuffered saline (pH7.2) containing antibody stabilizer

SPECIFICITY

This antibody recognizes human SCG2 (Secretogranin II) protein. It cross reacts to human, mice and rat.

STORAGE

The antibodies are stable for 24 months from date of receipt when stored at -20oC to -70oC. The antibodies can be stored at 2oC-8oC for three month without detectable loss of activity. Avoid repeated freezing-thawing cycles.

APPLICATIONS/SUGGESTED WORKING DILUTIONS*

- Western Blot: 0.1-1 µg/ml
- ELISA: 0.01-0.1 µg/ml
- Immunoprecipitation: 2-5 µg/ml
- IHC: 2-10 µg/ml
- Flow cytometry: Not tested
- Molecular Weight: 71.0
- Positive Control: Kidney Tissue
- Cellular Location: Cell Membrane

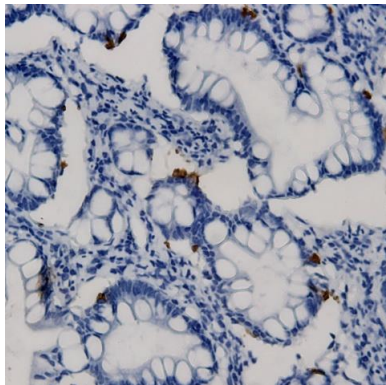
*Optimal dilutions should be determined by researchers for the specific applications.

FOR RESEARCH USE ONLY.

AbboMax, Inc 2528 Qume Drive, Suite 8, San Jose, California 95131, USA
1 408-573-1898 (Tel). 1 408-573-1858 (Fax). www.abbomax.com info@abbomax.com



DATA ATTACHMENTS



Immunohistochemistry: HKidney tissue (FFPE) stained with Rabbit anti-SCG2 antibody (Cat# 630-330) at 1:200 for 10 min @ RT. Staining of formalin-fixed tissue requires boiling tissue sections in 10 mM Citrate Buffer, pH 6.0 for 10 min followed by cooling at RT for 20 min.

REFERENCES

FOR RESEARCH USE ONLY.

AbboMax, Inc 2528 Qume Drive, Suite 8, San Jose, California 95131, USA
1 408-573-1898 (Tel). 1 408-573-1858 (Fax). www.abbomax.com info@abbomax.com